

Scaling for Success

Annual Report
2023-24



Communities
In Schools®

Eastern Pennsylvania





Communities
In Schools®

Eastern Pennsylvania

CONTENTS

Message From Our CEO and Board Chair . . .	3
Introduction to CIS of Eastern PA	4
Our Reach	5
Our Results 2023-24	6
A Night of MVPs and Memorabilia	7
Being Present Matters: 2024 & Beyond	8
Success Spotlight: Rallying Together	9
Corporate and Foundation Relationships . . .	10
Donors	11
Financials	14

BOARD OF DIRECTORS

BOARD CHAIR

Karianne Gelinas, *Lehigh Valley Economic Development*

VICE CHAIR

Adrian Marsh, *Olympus Corporation of the Americas*

TREASURER

Michael Zile, *M&T Bank*

SECRETARY

Raymon L. Williams, *Decarbonized Energy Tallgrass Energy*

PAST CHAIR

Michelle Schmidt, PhD, *Gettysburg College*

CIS Eastern PA President/CEO

Timothy Mulligan

Joetta Clark Diggs, *4-Time Olympian & Motivational Speaker*

Lizette Epps, *Alvernia University*

Maureen Gorman, *Stevens & Lee, PC*

Sandra Green, *Kutztown Community Partnership*

Angela K. Gosman, *PPL Corporation*

Hope Johnson, *Lehigh Valley Health Network*

Ellen Millard-Kern, *Retired*

Katelyn Mack, *LINC*

J. Stuart Pidcock, *The Pidcock Company*

Reginald Romain, *ADP*

Anne Zayaitz, Ph.D., *Kutztown University of Pennsylvania*

BERKS COUNTY ADVISORY BOARD

Yomary Castro, *City of Reading*

Mike Duff, *Penske*

Adonis Fleming, *Pennsylvania Office of the Governor*

Teri Hill, *Berks Business Education Coalition*

Michelle Reichard-Huff, *Berks County Intermediate Unit*

Christine Kokinda, *Capital Blue Cross*

Pamela Minto, *EnerSys*

Greg Potter, *Capital Blue Cross*

Mike Reese, *Million Youth Chess Club*

Zylkia Rivera, *Keller Williams Platinum*

Rebecca Shugar, *M&T Bank*

Christi Terefenko, *VoiceUp Berks*

MONROE COUNTY ADVISORY BOARD

Kim Diddio, *Diddio Law*

Jon Fenner, *Stroudsburg School District*

Sarah Jacobi, *Pocono Mountains United Way*

Bob Kelly, *Kelly Realty Group*

Sharon Laverdure, *Monroe County Commissioner*

Kenneth Long, M.B.A., *East Stroudsburg University*

Elizabeth Robison, *Pocono Mountain School District*

Jessica Teel Sadler, *Jefferson Health Plans*

Paul Schmid, *Retired Food Service Director, East Stroudsburg School District*

Edward Schaeffer, *Scouting*

Perry Schwarz, *Metropolitan Family Health Network, Inc.*

Victoria Strunk, *Gross McGinley*

Phillip St. James, *Sanofi*

Sarah Wallace, *Pocono Chamber of Commerce*

Dr. Rachael Weidlich, *Northampton Community College (Tannersville)*

Dear Friends,

At Communities In Schools of Eastern Pennsylvania (CIS of Eastern PA), our aim is to ensure that there is a caring adult in every child's life, guiding them on the path to success.

CIS of Eastern PA provided this vital resource in 45 schools and reached more than 41,000 students in 2023-24. After a tremendous 40th anniversary year, we jumped into the 2023-24 school year with renewed passion for our mission and a goal to bring CIS of Eastern PA to 25 more schools in the next 5 years.

As CIS of Eastern PA grew, we supported 9.6% more students and saw even better results. In the 2023-24 school year, 92% of our seniors graduated on time! Plus, 82% of students strengthened their social-emotional skills, 80% improved academically, and 78% showed better behavior.

Our regional impact isn't just about the numbers—it's about opening new doors for students facing life's challenges. Take Anna, for example. Middle school was tough for her. She dreamed of going to college but lacked the guidance and support to get there. Struggling with poor grades, behavior issues, and difficult relationships with peers and teachers, Anna was hesitant to work with CIS of Eastern PA in 8th grade. At first, she resisted.

But over time, she realized that her CIS Site Coordinator truly cared and was committed to her success. When Anna finally let her guard down and embraced the support, everything changed. Together, they set goals, created a plan, and worked toward success. By the end of 8th grade, Anna had transformed—her grades had improved dramatically, and her peers honored her with multiple awards at graduation.

Now, Anna believes in herself and her future. She put in the effort, and CIS of Eastern PA helped her see the path forward—because we believed in her every step of the way.

CIS of Eastern PA is making a real difference in schools across Eastern Pennsylvania, changing the lives of students like Anna and so many others. Our mission to surround students with a community of support and empower them to stay in school and achieve in life has never been more important.

Our impact wouldn't be possible without the generosity of friends like you. Thank you for helping bring the CIS mission to life. There's still so much work ahead to ensure every child feels the support of a caring adult and believes in a future filled with hope.

Sincerely



Karianne Gelinas

Karianne Gelinas
CIS of Eastern PA
Board Chair



Timothy Mulligan

Timothy Mulligan
President/CEO

LETTER FROM BOARD CHAIR AND CEO



In the 2023-24
school year,
92%
of our seniors
graduated
on time!





Scaling for Success- The CIS Story

Our national CEO, Rey Saldaña visited our affiliate to hear about the great work that is being done in Eastern Pennsylvania.

For over 40 years, Communities In Schools of Eastern Pennsylvania (CIS of Eastern PA), has been building strong relationships with students and communities. It is at the heart of everything we do. Our mission is to work hand-in-hand with schools to break down the non-academic barriers that stand in the way of student success. Many of our school communities face significant challenges, from a lack of basic needs to chronic absenteeism and growing mental health concerns. We are proud to stand beside students, offering the one-on-one support they need to stay on track and graduate.

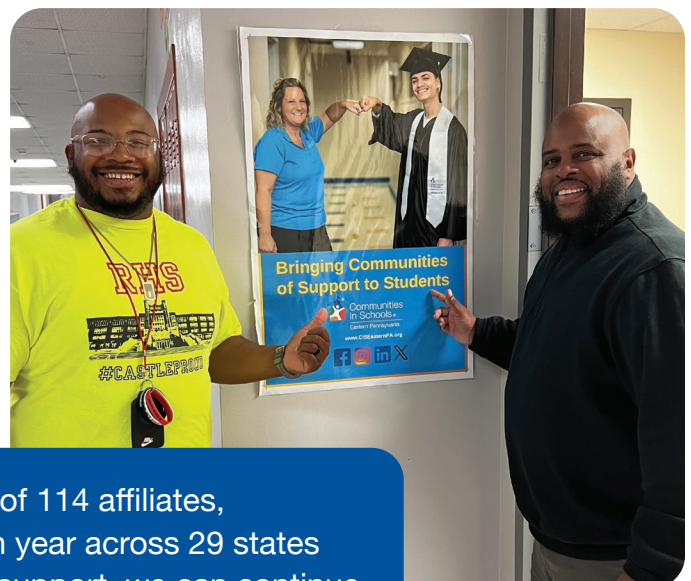
With a deep network of partners across Eastern Pennsylvania, we are able to ensure every student has access to the resources they need to thrive. Our collaborations with local food pantries allow us to provide backpacks full of food to families in need. Through our partnerships with local health networks, we connect students and families to vital mental health services. And with our creative, interactive attendance initiatives, we make school a place where students feel excited to show up and engage every day.

Our three-tiered approach to student services allows us to provide support at every level—individually, in small groups, and through school-wide initiatives that benefit entire student communities. As a lead partner with the United Way of the Greater Lehigh Valley, we help create resource hubs in elementary schools across Allentown, Bethlehem, and Easton, ensuring students have access to the support they need, all in one place. We have similar connections with other local United Way partners as well as the US Department of Education.

Scaling for the Future in Eastern PA

Over the past two years, CIS of Eastern PA expanded its student services model into schools across Chester and Delaware counties near Philadelphia, as well as Monroe County in the Pocono Mountain region. Thanks to our national Scaling for Success initiative and strong local support, we're already nearly halfway to our goal of serving 25 new schools by 2027!

A key partner in this growth is The Ballmer Group, whose national funding support is making it easier for schools to bring CIS services to their students—covering half the cost for school districts for up to three years. With this momentum, we're reaching more students than ever and ensuring they have the support they need to succeed.



We are proud to be part of a nationwide network of 114 affiliates, impacting **nearly two million students** each year across 29 states and the District of Columbia. Together, with your support, we can continue to make a difference in the lives of students who need it most.

Scaling For Success: Across Eastern Pennsylvania

ALLENTOWN SCHOOL DISTRICT

Harrison Morton Middle School*+
South Mountain Middle School*+
Trexler Middle School*+
Brigadier General Anna Mae Hays
Elementary School*
Central Elementary School*
Mosser Elementary School
Roosevelt Elementary School*
Sheridan Elementary School*
Union Terrace Elementary School*
Washington Elementary School*

ANTIETAM SCHOOL DISTRICT

Stony Creek Elementary School

AVON GROVE SCHOOL DISTRICT

Avon Grove Elementary School
Avon Grove High School

BETHLEHEM AREA SCHOOL DISTRICT

Freedom High School
Liberty High School
Northeast Middle School*+
Broughal Middle School
Fountain Hill Elementary School
Freemansburg Elementary School
Lincoln Elementary School*

EASTON AREA SCHOOL DISTRICT

Easton Area High School
Easton Area Middle School
Cheston Elementary School*
Paxinosa Elementary School*

EAST PENN SCHOOL DISTRICT

Emmaus High School
Eyer Middle School

FLEETWOOD AREA SCHOOL DISTRICT

Fleetwood Middle School
Fleetwood High School

LEHIGH CAREER AND TECHNICAL INSTITUTE

LINCOLN LEADERSHIP ACADEMY

NORTHWESTERN LEHIGH SCHOOL DISTRICT

Northwestern Lehigh High School

OCTORARA AREA SCHOOL DISTRICT

Octorara Intermediate School
Octorara Junior & Senior High School

POCONO MOUNTAIN SCHOOL DISTRICT

Clear Run Elementary Center
Clear Run Intermediate School
Pocono Mountain West Junior High School
Pocono Mountain West High School

READING SCHOOL DISTRICT

Reading Senior High School
Southern Middle School
Southwest Middle School*+
10th & Penn Elementary*+
Tyson-Schoener Elementary*+

SOUTHEAST DELCO SCHOOL DISTRICT

Academy Park High School
Darby Township School
Delcroft School
Harris School
Sharon Hill School

WHITEHALL-COPLAY SCHOOL DISTRICT

Whitehall-Coplay Middle School

WILSON AREA SCHOOL DISTRICT

Wilson Area Intermediate School

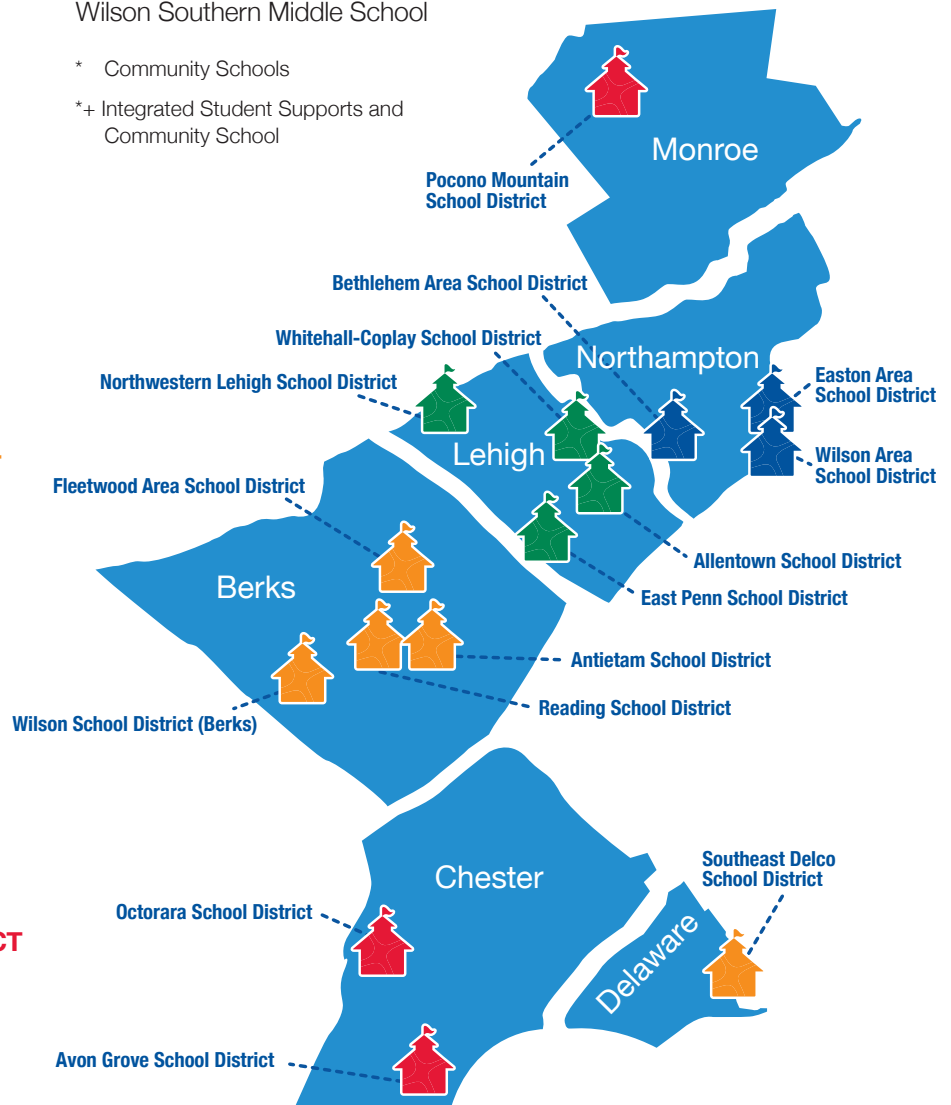
WILSON SCHOOL DISTRICT

Wilson West Middle School
Wilson Southern Middle School

* Community Schools

*+ Integrated Student Supports and
Community School

Communities In
Schools of Eastern
Pennsylvania serves
**15 school
districts**
in Berks, Chester,
Delaware, Lehigh,
Monroe and
Northampton counties.



Scaling For Success:

How Data-Driven Strategies Are Fueling Unprecedented Statistical Growth

CIS of Eastern PA uses data to drive informed decisions and enhance our mission of helping students succeed. By analyzing data such as academic performance, attendance, and behavioral reports, we identify trends and tailor services to address the specific challenges our students face. Our data tracks the effectiveness of our programs by measuring changes in key outcomes like attendance and academic achievement.

Data also helps us collaborate with schools and community partners, ensuring that resources are allocated where they are most needed. This approach enables us to refine our strategies, optimize interventions, and scale successful programs, maximizing our impact and ensuring every student receives the support necessary for success.



41,777
Students served



92%
Graduation Rate



96%
Promotion Rate



79%
of students improved on
their academic goals



82%
of students improved their
Social Emotional Learning



78%
of students improved on
their behavioral goals



79%
of students improved on
their attendance goals



Champions For Education: A Night of MVPs and Memorabilia

We grew our Leadership Circle this year with the addition of longtime board members Jack Gross and Kim Capers!



On October 25th, 2024 we gathered to honor the dedication and contributions of our remarkable volunteers that help to advance the mission of Communities In Schools in Eastern Pennsylvania. Our theme is Being Present Matters, and last year, it came to life like never before. Hundreds of volunteers showed up in countless ways, making a meaningful impact on our students and families.

Congratulations to Kathleen & J.B. Reilly and Denise & Bill Spence on receiving the 2024 Champions For Education award for their longstanding commitment to the mission of CIS of Eastern PA!

Kim Capers and Jack Gross were inducted into the CIS of Eastern PA Leadership Circle, which acknowledges individuals who have provided transformational leadership and enduring support for CIS of Eastern PA's mission.

We were thrilled to celebrate some very special "MVPs" who made our 40th anniversary celebration the single largest fundraising success in agency history. We will be forever grateful to Joetta, Bruce Link, David Yanoshik, and Olympus Corporation of the Americas!

Additionally, we are deeply grateful for the generous support from our corporate and individual sponsors, volunteers, and community friends. Your contributions enable us to continue supporting and expanding our programs to serve over 41,000 students with unmet needs in the region.



Being Present Matters: 2024 & Beyond

At CIS of Eastern PA, we understand that student success isn't just about academics—it's about ensuring students are present, engaged, and supported both inside and outside of the classroom. This is why we launched the "Being Present Matters" initiative, designed to address the growing issue of chronic absenteeism and help students stay on track to graduation.

Chronic absenteeism is one of the most significant barriers to student success, and its effects have been amplified in the post-pandemic era. Missing even a few days of school can have a lasting impact on a student's academic performance, social development, and overall future opportunities. Many students face challenges like mental health struggles, family instability, or basic needs insecurities that can prevent them from attending school regularly. The "Being Present Matters" initiative aims to break down these barriers by providing students with the support they need to show up and stay engaged.

Central to this initiative is the belief that relationships matter. Our dedicated team works directly with students, families, and schools to identify the underlying causes of absenteeism and offer tailored solutions. Whether it's connecting students with food resources, mental health services, or transportation support, we ensure they have the resources to attend school and succeed. By building trust and rapport, we foster an environment where students feel seen, supported, and motivated to be present.

But we don't stop at just addressing the challenges. We also make attending school an exciting and rewarding experience. Through creative and interactive attendance programs, such as school-wide challenges and fun incentives, we

engage students in ways that make school feel more enjoyable. These programs not only encourage consistent attendance but also reinforce the importance of showing up and participating in their education.

Our initiative is strengthened by our deep connections to the community. Through partnerships with local organizations, including food pantries, health providers, and businesses, we create a network of support that helps remove obstacles for students and their families. By working together with schools and community partners, we ensure that every student has access to the resources they need to succeed.

The "Being Present Matters" initiative is just one example of how CIS of Eastern PA is helping students overcome challenges and stay on the path to graduation. With your support, we can continue to make a lasting impact on students' lives, ensuring they have the tools, resources, and encouragement to be present, stay engaged, and reach their full potential. When students show up, they are one step closer to achieving their dreams.



Our Regional Director of Operations, Phil Parise, joined 69 News at Sunrise to talk about our Being Present Matters campaign and the impact that our site professionals have on students in our area.



Scan the QR code to see why "Being Present Matters"



Success Spotlight: Rallying Together



In the face of unimaginable hardship, an Allentown family found hope and support when they needed it most. A mother, courageously battling cancer, was doing everything she could to care for her children while navigating the overwhelming challenges of moving across the country with very little. With nowhere else to turn, this family was referred to CIS of Eastern PA, where they found not just assistance, but a lifeline.

CIS of Eastern PA provided one-on-one support for the student, offering a safe space to talk, share, and take a break from the stresses of home life. The student knew that they had a place to turn to, where they could feel heard and supported as they navigated both the emotional and academic challenges they were facing. For the mother, CIS became a crucial resource, guiding her to consistent food donations and connecting the family with ongoing support. But the help didn't stop there.

During the holiday season, when many families are already stretched thin, our Site Coordinator went above and beyond. With the generosity of outside donors, they were able to bring some much-needed joy to this family. Our team not only provided groceries to ensure they would have a festive meal, but they also organized donations of Christmas presents for the children, creating a sense of normalcy and joy amidst the chaos. For a family that was struggling so deeply, this act of kindness was more than just gifts—it was a reminder that they weren't alone.

This story is a testament to the power of community. Through the collective support of our Site Coordinator, donors, and volunteers, this family found a network of care, compassion,

and tangible resources when they needed them most. This collaborative effort ensured the student was able to continue their education, the family was able to meet their basic needs, and together, they built a foundation of hope for the future.



Corporate & Foundation Relationships



Past and Current Board of Directors

Communities In Schools Eastern Pennsylvania



The support from local corporations and foundations is essential to helping students stay on track to graduate. Through your financial contributions we are able to expand programs like academic tutoring, mentorship, and mental health services, providing students with the resources they need to overcome challenges. These partnerships allow CIS to reach more students and create environments where they can thrive academically and grow personally.

In addition to funding, many corporations and foundations engage in volunteer efforts, where employees mentor, tutor, and organize supply drives for students. These hands-on contributions strengthen the sense of community and

The Link Family Foundation “I feel proud that we support CIS through the foundation, we feel we made the right choice over and over again as we hear about the successes of the students.”

– *Bruce Link,*
Link Family Foundation



provide students with valuable role models and connections. The commitment from these organizations plays a crucial role in creating a supportive network that fosters educational success and helps reduce dropout rates, giving students the opportunity to achieve their full potential.

We would also like to acknowledge the many years of support from the **Chandler Barnes Foundation**. Their continued support provides scholarship opportunities to our graduating seniors. Through these funds, students are eligible to receive support for college or trade schools.



We would like to thank **Olympus Corporation of the Americas** for their continued support around our graduation celebrations as well as providing backpacks for our students at the beginning of each school year!

EITC: Tax credits are available to businesses in Pennsylvania that are contributing to the Educational Improvement Tax Credit. From July 2023 through June 2024, CIS received a total of \$107,250 in funds from American Bank, East Penn Manufacturing, Embassy Bank, Fulton Bank, QNB Bank, Truist Bank and UGI Utilities

Donors

Corporate Donors

Foundation and Community Donors

Individual Donors

CORPORATE DONORS

\$50,000 to \$150,000

Anonymous

\$25,000 to \$49,999

Olympus Corporation of the Americas

\$10,000 to \$24,999

PPL Corporation

\$1,500 to \$9,999

Air Products, Inc.

Avolta FNA Hudson Group (HG) Retail

BSI Corporate Benefits , LLC

Capital Blue

Chiesi c/o Cornerstone Biopharma Inc.

City Center Investment Corporation

Cornerstone Benefits, Inc.

EnerSys Inc.

FirstEnergy

Gross, McGinley, LLP

Joetta Sports & Beyond, LLC

Just Born, Inc.

Lehigh Valley Health Network

Modera Wealth Management

North Star Construction Management

St. Luke's University Health Network

The Pidcock Company

UPMC Diversified Services (affiliate of UPMC

Health Plan)

\$500 to \$1,499

CampusWorks, Inc.

Cohesion Network Inc.

DESCCO

FEVO

First Commonwealth FCU

Follett Corporation

Highmark Blue Shield

Keystone Agency Partners LLC

Lafayette College

LINC, Inc.

Members 1st Federal Credit Union

Night Vision Devices, Inc.

United Way of the Greater Lehigh Valley

Valley Youth House

Weinstein Realty/Sunburst

Property Management

Up to \$499

Alvernia University

BerkOne Inc

Berns Team Blessings, Inc.

Buckeye Partners L.P.

CRP Media Group LLC d/b/a

Palo Magazine

Lehigh Valley Road Runners

Office Of Rep. Susan Wild

TeenWorks

The Zylkia Rivera Team Realtor

Wam Inspires

"I really love working with the kids — whether it's academics or emotional stressors, I love to watch them fight to succeed in school and in life."

— Amy Williams,,
Site coordinator, Emmaus High School



FOUNDATION/COMMUNITY DONORS

\$50,000 to \$500,000

Anonymous

Dexter F. and Dorothy H. Baker Foundation

Donald B. & Dorothy L. Stabler Foundation

Link Family Foundation

The Harry C. Trexler Trust

\$25,000 to \$49,999

Frank E. and Seba B. Payne Foundation

The Alan & Ruby Riedel Foundation

The Wyomissing Foundation

\$10,000 - \$24,999

Air Products Foundation

Julius & Katheryn Hommer Foundation

Nordson Corporation Foundation

The Garrigan Foundation

Two Rivers Health & Wellness Foundation

\$1,500 to \$9,999

CAPTRUST Community Foundation

Congregation of Keneseth Israel

Lehigh Gas Foundation

M&T Charitable Foundation

Saint John's United Church of Christ

\$500 to \$1,499

Highmark Blue Shield

Parkland HS Girls Soccer Booster Club

Phantoms Charities

The Levis Family Fund

The Ross J. and Wendy G. Born

Family Charitable Trust

Zachary Barker Chittick Foundation

Up to \$499

A.B.A.T.E of PA-LV Chapter

Emmanuel United Church of Christ

Heidelberg Materials

Hosensack Evangelical

Congregational Church

Zion E C Church



INDIVIDUAL DONORS

Champion (\$50,000 +)

Murray Goodman
Bob and Sandy Lovett
Charles and Ruth Marcon
J. B. and Kathleen Reilly
Bill and Denise Spence

Hero (\$10,000-\$24,999)

Ron Hodges
Joseph and Judith Kaminski
Michael and Christine Perrucci



Advocate (\$1,500 - \$9,999)

Jacqueline Agostinho
Rob and Kristen Bennett
Daniel and Kim DelSordo
Alfred and Jill Douglass III
John and Donna Eureyecko
Lauren and Mark Fine
Angela Gosman
Sandy Green
John and Kathleen Hart
Andy and Sharon Hubregsen
Edward and Gayle Labuda
Katelyn and Adam Mack
Adrian Marsh
Christine Martin
Timothy and Peggy Mulligan
David Noel
Joseph and Mabel Raymond
Reginald and Theresa Romain
Michelle Schmidt
Frank and Yvonne Schweighardt
Matthew and Ronnie Sorrentino
Charles Versaggi, Jr.
John and Chrissie Wagner
Bruce and Judy Waldman
Raymon Williams
Anne Zayaiz

Patron (\$500-\$1,499)

Donna & Carl Allio
Hank and Joanne Barnette
Kristie Beitler
Constantine and Judy Belaires
Ann & Dennis Benner
Mike and Jane Bruckner
Michael Caverly
Kelly Chando
Joan Cole
John Conklin & Maria Esposito
Percy and Anne Dougherty
David Erickson
Vincent Fazio
Fred and Nancy Fenselau, Jr.
Karianne Gelinis
Maureen Gorman
John and Sandra Gross
Jacky Guadalupe
Tonya Harris
Tina Hasselbusch
Ilene Hochberg Wood
William Hoffman
Hope Johnson
Stephen and Melanie Jones
Terry Kennedy
Ellen Millard Kern
Stephen Link
Patricia Lyons
John MacDonald
Lara Marcon
Arthur and Nadine Mason
Dennis and Stephanie Murphy
Tyler & Jenna Papaz
Michael and Michele Pessina
Erika and Matthew Petrozelli
Robert and Rebecca Rupel
Wendy Seiffert
Kim Shively
Mark and Erica Simmons
David Torrey
Karen and Joseph Walton
Tom & Elaine Whalen
David and Monica Willard
Janet Young
Katherine Zeth
Michael Zile

Friend (Up to \$499)

Marc Abo
Richard Adams, Jr.
Iyinoluwa Akingbade
Eric and Jeanette Andersen
Angelica Andrade
Antonio and Karen Angello
Heather Annunziata
Sharon Arner
Suzanne Barba
Jason Barnett
Michael Barry
Anne Baum
Kenneth Baumert
Susan Benner
Donald and Arlene Bernhard
Mykayla Biechy
Hasanna Birdsong
Melody Bradford
Roxanna Brandle
Lisa Brinker
Stephanie Britton
Jane Brooks
Kimberlu Brown
Michael A Bushner
Lee and Dolly Butz
Ronald Capers
Joyce Cerniglia
Nina Chakraborty
Gautam Chavan
Deb and Bill Clune
Alex Cofre
Ceil Connelly-Weida
Kelly Costello
Patricia Cowley
Michael and Susan Cox
Dennis Csensits
Yusuf Dahl
Susan David
Frank Derrick
Laurie Deturk
Vicki Doule
Nicole Drakely
Curtis Dretsch
Mary Ellston
Donovan Dale Fairclough
Terence and Sharon Faul
Jonathan Fenner
Gardenys Fernandez
Logan Fisher
Jillian Fligge
Mitch Friedman
Karianne Gelinis
Stephanie George
Patricia Gorman
John Gross



Friend (Up to \$499) continued

Krysta Gunderman
Donald and Virginia Haberman
Teri Haddad
Isawm Hammoud
Geoffrey Harrington
Amy Heckman
Kathy Heckman
Kim Heggenstaller
Laura Herzog-Kaplus
Jason Hickman
David Hoffman
Jenae Holtzhafer
Eva Howells
Amour Inman
Murtaza Jaffer
David Jones
Scott Jones
Jon Kametz
Richard Kern
Peter and Carol Kern
Patrick and Renee Kleaveland
James Klunk
Lori Knerr
Lenore Kohl
Donna Kopes
Robin Kulesa
Richard and Janet Lane
Linda Lechner
Oluwamayowa Lee
Benjamin Lentine
Marcianne Lesko
Lisa Liddington
Thea Lind
Bruce and Luanne Link
Gregory Link
Joyce Lorish
Dianne Pagano Manges
John Mariani
Chad Markulics
Matt Markus
Sara Martinez
Margaret McConnell
Mike McCorristin
Dru McCray
Ann McGeary
Deborah McGinley
Laura Mchugh
Joshua Mclunkin
Karlynn Miller
Michael Molewski
Michele Mollo
Judy Mondino
Westley Morris
Paul and Maureen Mourt
Rachel Moyer
Anthony and JoJo Muir
Mike Mulligan

John, Melissa, & Avery Mulligan
Brian and Katherine Mulligan
Jamie Musselman
Chris Nelson
Helen Neubauer
Kristine Ortiz
Krista Ortwein
Tammy Patterson
Anita Jo Paukovits
Mary Jo Pavinski
Erika Petrozelli
Megan Pildis
Andrew and Morgan Polony
Nithin Rajaram
Mike and Kate Raymond
Janine Reppert
Paul Ricciardi
Zylkia Rivera
Johnny Roberts
Gigi Romano
Lisa Rosati
Joseph Roy
Colleen Royer
Rey Saldana
Victor and Nadya Salicetti
Katie Santana
Lisette Santana
Stacey Scholl
Diane Scott
Rick Scott
David Serfass
David and Susan Shaffer
Ron and Megan Skinner
Donna Smith
Michael Spellman
Melissa Starace
Ann Marie Surovy
Marie Ann Sutera-Wendells
Donald Tourney
Lisa Trenge
Kathleen Trimble
Andrea Vaccaro
George Vaughan
Gerard Velardi
Vincent Velardi III
Cathy Wagner
Michael Wascura
Kari Wehr
Denise Welser
Carol Weidman
Amy Williams
Marshall Wolf
Sue Yee
Doug Yingling
Katie Yodock
Julie Zumas

“Our partnership with Communities In Schools is invaluable in addressing the needs of our most vulnerable children. Together, we combat food insecurity and provide enriching afterschool programming, ensuring every child has the support they need to thrive. This collaboration embodies our shared commitment to reaching children where they are and creating opportunities for them to succeed.”

– Michael Toledo,
President & CEO
Centro Hispano
Daniel Torres Inc



Financials

Fiscal Year July 1, 2023 to June 30, 2024

STATEMENT OF ACTIVITIES	Without Donor Restrictions	With Donor Restrictions	2024 Total
<i>Operating Support & Revenue</i>			
Contributions, Support, & Grants	\$791,883	\$524,680	\$1,316,563
Government Grants	946,113	525,000	1,471,113
School District & United Way Contracts	3,584,310	-	3,584,310
Special Events, net benefit costs to donor	85,928	-	85,928
Other Income	82,827	-	82,827
Net Assets Released from Restriction	643,807	(643,807)	-
<i>Total Operating Support & Revenue</i>	\$6,134,868	\$405,873	\$6,540,741
<i>Expenses</i>			
Integrated Student Support	\$3,075,358	-	\$3,075,358
Community Schools	1,668,072	-	1,668,072
Other Programs	587,692	-	587,692
Management & General	542,613	-	542,613
Fundraising	540,579	-	540,579
Total Expenses	\$6,414,314	-	\$6,414,314
<i>Net Investment Return</i>	\$341,445	-	\$341,445
<i>CHANGE IN NET ASSETS</i>	\$61,999	\$405,873	\$467,872

STATEMENT OF FINANCIAL POSITION

Assets		Liabilities	
Cash & Cash Equivalents	\$2,148,976	Current Liabilities	\$389,357
Certificates of Deposit	303,996	Operating Lease Liability	283,649
Grants, Contributions, & Trade Receivables	713,742	Total Liabilities	673,006
Pledges Receivable	445,670		
Prepaid Expenses	38,463	Net Assets	
Total Current Assets	3,650,847	Without Donor Restrictions	
		General	674,644
Investments at fair market value	3,652,467	Board Designated	5,026,343
Fixed Assets, net	67,655	Invested in Fixed Assets	67,655
Operating Lease Right of Use Asset	263,674	With Donor Restrictions	1,192,995
TOTAL ASSETS	\$7,634,643	Total Net Assets	6,961,637
		TOTAL LIABILITIES & NET ASSETS	\$7,634,643

A complete copy of the audited financial statements is available upon request from Communities In Schools of Eastern Pennsylvania, Inc.

Ways to Give!

GIVE ONLINE

Your online donation to CIS of Eastern PA will start making a difference in the lives of our students right away.



MAIL YOUR GIFT

You can mail a check payable to **CIS of Eastern Pennsylvania** together of the following locations:

CIS of Eastern PA
739 N. 12th Street
Allentown, PA 18102

CIS of Eastern PA
1800 E. High St. Suite 375
Pottstown, PA 19464

DONATE SUPPLIES

We're accepting in-kind donations of new, basics needs items and supplies that students and families need most right now.

Amazon Wishlist



In-Kind Donation



SUCCESS SOCIETY

Join the **CIS Success Society** with an annual gift of \$500 or more.

By becoming a member of the Success Society, you will be an active participant in changing the future for the better.



PARTNERSHIPS

Our relationships with corporate partners and locally-owned businesses connect kids to new resources and relationships every day.

Reach out to us for more information about supplies drives, sponsorships, EITC contributions, virtual giving campaigns and more!

SPONSORSHIPS

Become a sponsor of our signature events

Ready, Set, Graduate!
Champions for Education

For more information on upcoming events, please contact:

Maria Esposito,
VP of Advancement

APPRECIATED STOCK

Amplify your impact by **donating appreciated stock to CIS of Eastern PA**. Many supporters find that giving stock helps them do more than what's possible when giving cash.



WILLS & TRUSTS

You can ensure the mission of CIS of Eastern PA lives on for generations to come by joining a special group of thoughtful visionaries who have kindly **remembered us in their wills and living trusts**.



VIRTUAL BACKPACK

Help equip each student with a backpack filled with vital supplies, such as notebooks, pencils, pens, glue, and hygiene essentials. With your support, we can ensure that every student starts the school year full prepared and ready to succeed.



"CIS has given me the opportunity to get back to working with kids, their families, and helping the Tyson Schoener school and surrounding community of Reading. We have been able to impact the kids and their families by being able to bring the additional supports that the school may not be able to provide, and it has been a joy to see the kids' smiling faces."

– Manual Sostre, Community School Coordinator, Tyson-Schoener Elementary School



Communities
In Schools®

Eastern Pennsylvania

ADMINISTRATIVE OFFICE

739 North 12th Street, Allentown PA 18102

REGIONAL OFFICE

1800 E. High St. Suite 375 Pottstown, PA 19464

ciseasternpa.org

484-834-8830

Follow Us @CISEasternPA

